

Supporting Teaching and Learning in Schools NVQ Level 3



Mandatory Units

- Help to keep children safe
- Support pupils' learning activities
- Promote positive behaviour
- Develop and promote positive relationships
- Support the development and effectiveness of work teams
- Reflect on and develop practice

Optional Units

Candidates select 4 units from the following options choices. Select any 4 units from groups A—E but no more than 2 units from group E.

Group A—Supporting pupil's learning

- Use information and communication technology to support pupils' learning
- Plan, deliver and evaluate teaching and learning activities under the direction of a teacher
- Contribute to the planning and evaluation of teaching and learning activities
- Support literacy development
- Support numeracy development
- Support implementation of the early years curriculum
- Support teaching and learning in a curriculum area
- Observe and promote pupil performance and development
- Contribute to assessment for learning
- Prepare and maintain the learning environment
- Promote the transfer of learning from outdoor experiences

Group B—Meeting additional support needs

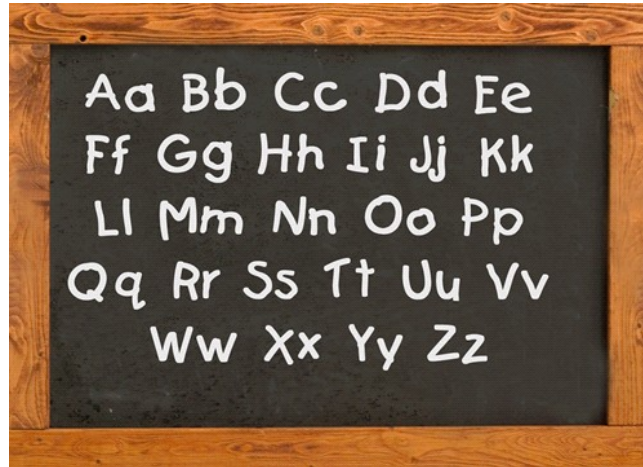
- Provide literacy and numeracy support to enable pupils to access the wider curriculum
- Support gifted and talented pupils
- Support bilingual/multilingual pupils
- Provide bilingual/multilingual support for teaching and learning
- Contribute to the prevention and management of challenging behaviour in children and young people
- Support children with disabilities or special education needs and their families
- Support pupils with communication and interaction needs
- Support pupils with cognition and learning needs
- Support pupils with behaviour, emotional and social development needs
- Support pupils with sensory and/or physical needs
- Assist in the administration of medication
- Work with children and young people with additional requirements to meet their personal support needs

Please contact us on 0114 281 5718 for more information



CQM Learning Ltd 3 Westbrook Court Sharrow Vale Road Sheffield S11 8YZ
Telephone: 0114 281 5718 Fax: 0114 281 5785 www.cqmllearning.co.uk

Supporting Teaching and Learning in Schools NVQ Level 3



Group C—Providing pastoral support

- Promote children's well-being and resilience
- Work with young people to safeguard their welfare
- Enable young people to be active citizens
- Support young people to be active citizens
- Support young people in tackling problems and taking action
- Support children and young people during transition in their lives
- Facilitate children and young people's learning and development through mentoring
- Contribute to improving attendance
- Support children and families through home visiting

Group D—Supporting the wider work of the school

- Provide displays
- Invigilate tests and examinations
- Lead an extra-curricular activity
- Plan and support self-directed play
- Contribute to maintaining pupil records
- Monitor and maintain curriculum resources
- Organise cover for absent colleagues
- Organise and supervise travel
- Escort and supervise pupils on educational visits and out-of-school activities
- Liaise with parents, carers and families
- Provide information to aid policy formation and the improvement of practices and provision

Group E—Working with colleagues (no more than 2 units allowed from this group)

- Develop and maintain working relationships with other practitioners
- Provide leadership for your team

OR

- Provide leadership in your area of responsibility
- Allocate and check work in your team
- Lead and motivate volunteers
- Provide learning opportunities for colleagues
- Support learners by mentoring in the workplace
- Support competence achieved in the workplace

Please contact us on 0114 281 5718 for more information



CQM Learning Ltd 3 Westbrook Court Sharrow Vale Road Sheffield S11 8YZ
Telephone: 0114 281 5718 Fax: 0114 281 5785 www.cqmlearning.co.uk